

CATEGORY
Arenas, Stadium, Theaters,
Convention Centers

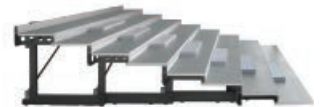
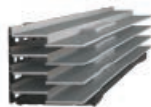
Telematic 200 Telescopic Seating Riser System

Product Information Sheet



The premier choice. Reliability, performance, and durability all found in one telescopic seating system.

The new StageRight TeleMatic 200 Telescopic Seating Riser System was designed to provide unparalleled reliable performance to venues demanding premium efficiency. The StageRight TeleMatic 200 telescopic can reduce operational expenditures throughout the life of the system by providing consistent, reliable operation and greater years of service. Fan experience will be improved with a sound dampening deck system that feels as solid as permanent seating. For the ultimate in reliability, performance, and durability the Telematic 200 is the premier choice for telescopic seating.



Telematic 200 Telescopic Seating Riser System

Features and Benefits

Computer Controlled NaviTrak System™

- Computer controlled drive system provides systematic deployment of risers.
- Multi-configurable computer system provides ultimate flexibility for system programming. Pre-program for a variety of events, like: Basketball, hockey, concert, rodeo, and special events.
- Repeatable electronic deployment provides years of maintenance free use and can speed changeover time.
- Optional Wireless Technology available.

Composite Deck Construction

- Provides the feel of a permanent structure.
- Reduces walking traffic noise and "drum-head" effect.
- Strong extruded aluminum deck edge.
- Laminated stress skin panel provides unmatched strength in the industry.
- Slip resistant vinyl surface provides comfortable and safe walking surface on riser decking.

Sturdy, Durable Understructure

- Substantial structure provides wobble-free patron environment.
- Clean overall appearance top to bottom with no hanging wires.
- Durable baked-on powder coated understructure and components.

Seating

- Accepts both riser and deck mount chairs.

Extruded Aluminum Closure

- Allows for configurable attachment of accessories including seating, steps, and rails.
- Clear anodized aluminum provides long lasting finish with simple cleanup.
- Clean, energy efficient LED's for stair lighting. Level of brightness can be adjusted.
- Simple chair beam operation. Seats go up safely and quickly with automatic locking feature.

Technical Specifications

Function

Provide a portable multi-level telescopic seating riser system to meet the seating and/or performance requirements of arenas, convention centers, stadiums and other public or private facilities.

Integral Deck

The integral deck shall feature a slip resistant durable vinyl surface permanently adhered to a composite deck to provide a solid surface with sound dampening qualities.

Telescopic Support System

The support system shall be retractable, and fully self-contained. It shall have no loose parts. Support System shall incorporate a linear drive system eliminating the need for heavy weight plates associated with friction drive systems. Support system shall incorporate computerized technology that will maintain the system's alignment while in operation.

NaviTrak Drive System™

Windows based software system utilizes touch screen controls. Optional wireless technology is available.

Setup

Setup of a support section shall be accomplished by fork lifting the section to its setup location, detaching the casters (if necessary), and extending the lower levels away from the uppermost level. Accessories may then be connected to the support system.

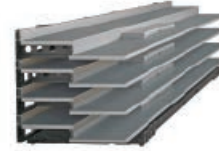
Construction

The support system shall be finished with a non-glare baked on polyester powder coating material. Color choice to be selected by owner from manufactures standard color charts. The support system shall contain integral closure panels between each row.

Side Extended View



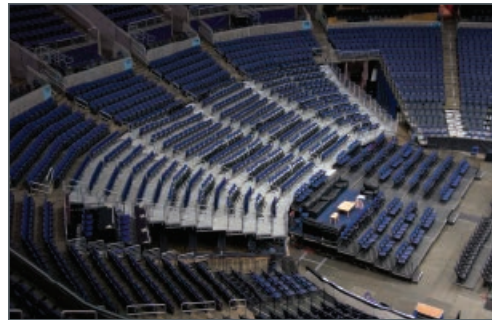
Side Retracted View



View from Back



Front Extended View



The Telematic 200 Seating Riser in Verizon Center

Ordering Information

TeleMatic 200 Telescopic Seating Riser System

Due to the custom nature of the TeleMatic 200, please contact a sales representative at 800-438-4499 to discuss your project needs, receive design assistance, specification and pricing.



STAGERIGHT